

||JaiSriGurudev||



SRI ADI CHUNCHANAGIRI WOMEN'S COLLEGE, CUMBUM

(Accredited by NAAC with 'A' Grade)

(Run by Sri Adi Chunchanagiri Shikshana Trust[®])

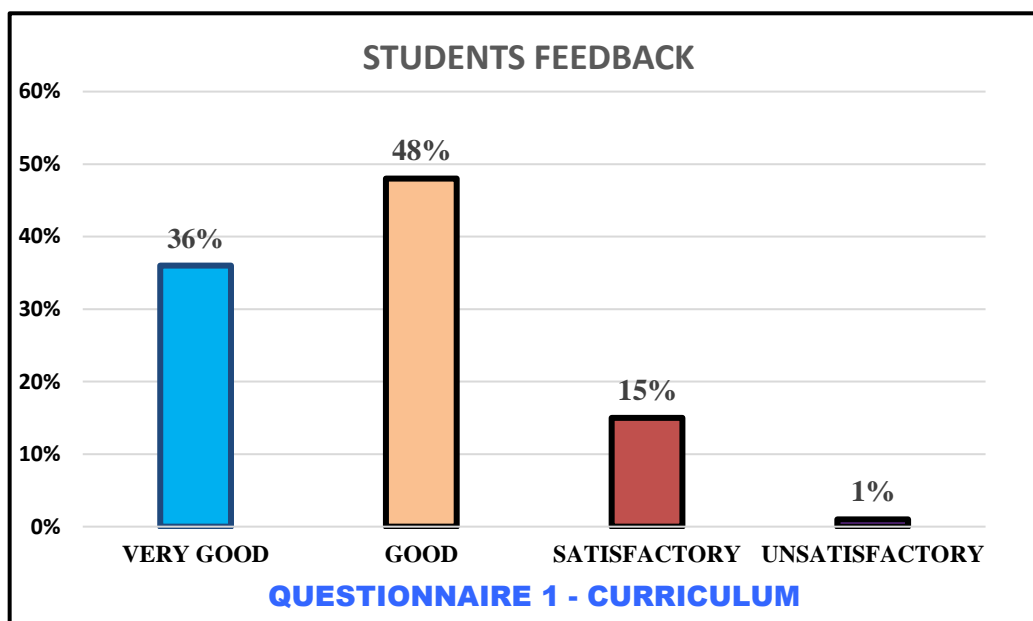
**Karnataka) (Affiliated to Mother Teresa Women's University,
Kodaikanal) (Recognised Under Section 2(f) & 12(B) of UGC Act. 1956)**



Feedback from the Students, Teachers, Alumni, Employer and other stakeholders are considered for the effective functioning of the Institution. **IQAC** functions with the objective of qualitative and quantitative enhancement of the college. The quality assurance strategies and best practices adopted by IQAC with innovation and transparency is the hallmark of the administration of the college, hence, obtaining feedback from all stakeholders is practiced effectively. The feedbacks got from all the stakeholders such as Alumni, students, and faculty are collected through Google Form during this Academic Year 2023-2024. IQAC analyses thoroughly about the feedbacks in Governing Council meeting, consequently, actions are taken so as to enhance the development of the institution.

I. STUDENTS FEEDBACK

QUESTIONNAIRE 1: CURRICULUM



Parameters:

A-Depth of the course content including project work if any

B-Extent of course coverage

C-Applicability/relevance of course to real life situation

D-Learning acquisition (in terms of knowledge, concepts, manual skills, \
analytical abilities and broadening perspectives)

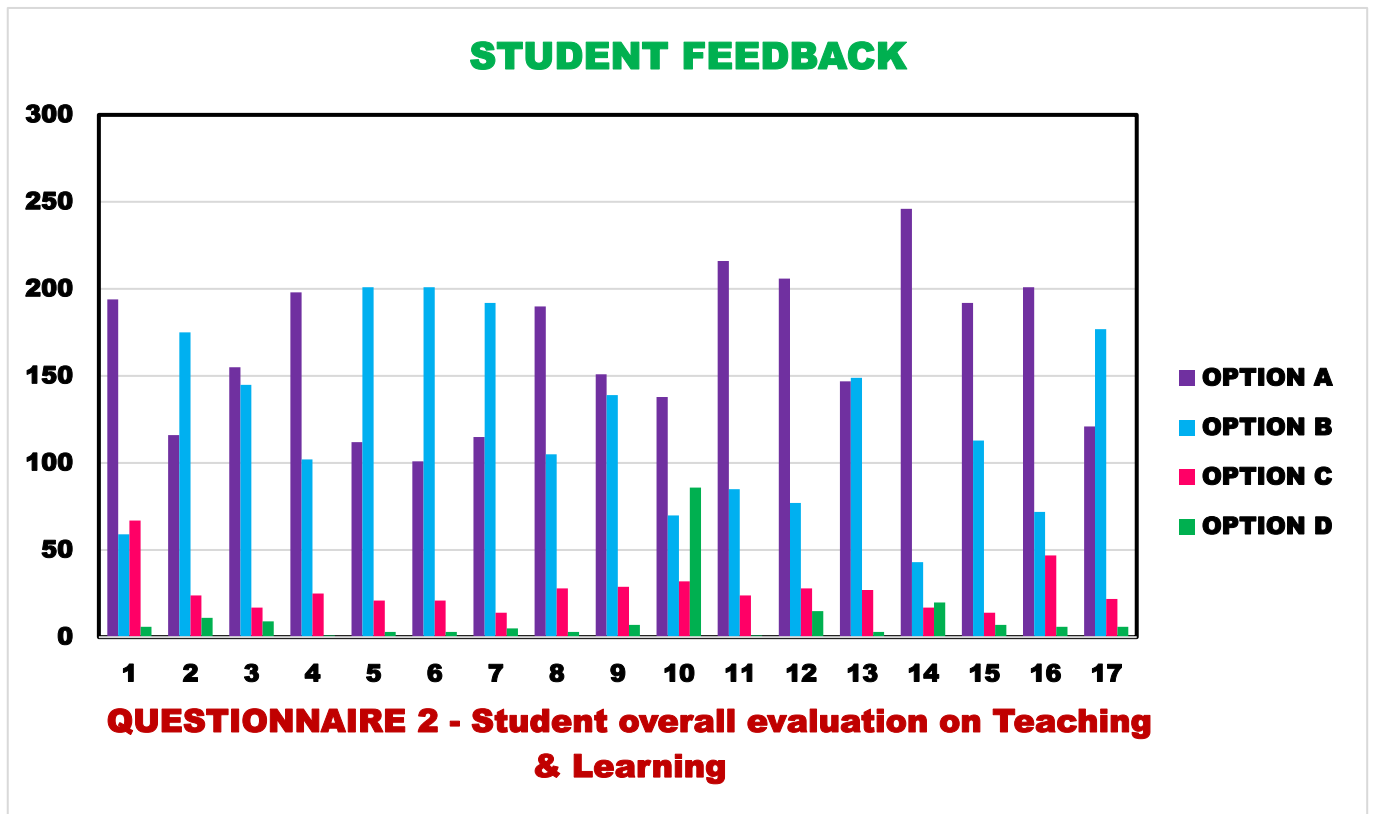
E-Clarity and relevance of textual & learning material of the course

F-Relevance of other source materials (library) of the course

G-Extent of effort required for students.

Almost all the parameters' overall rating fell between very good and good. As per the rating provided by the students, 99% of the students were satisfied with curriculum.

QUESTIONNAIRE 2: TEACHING, LEARNING AND EVALUATION

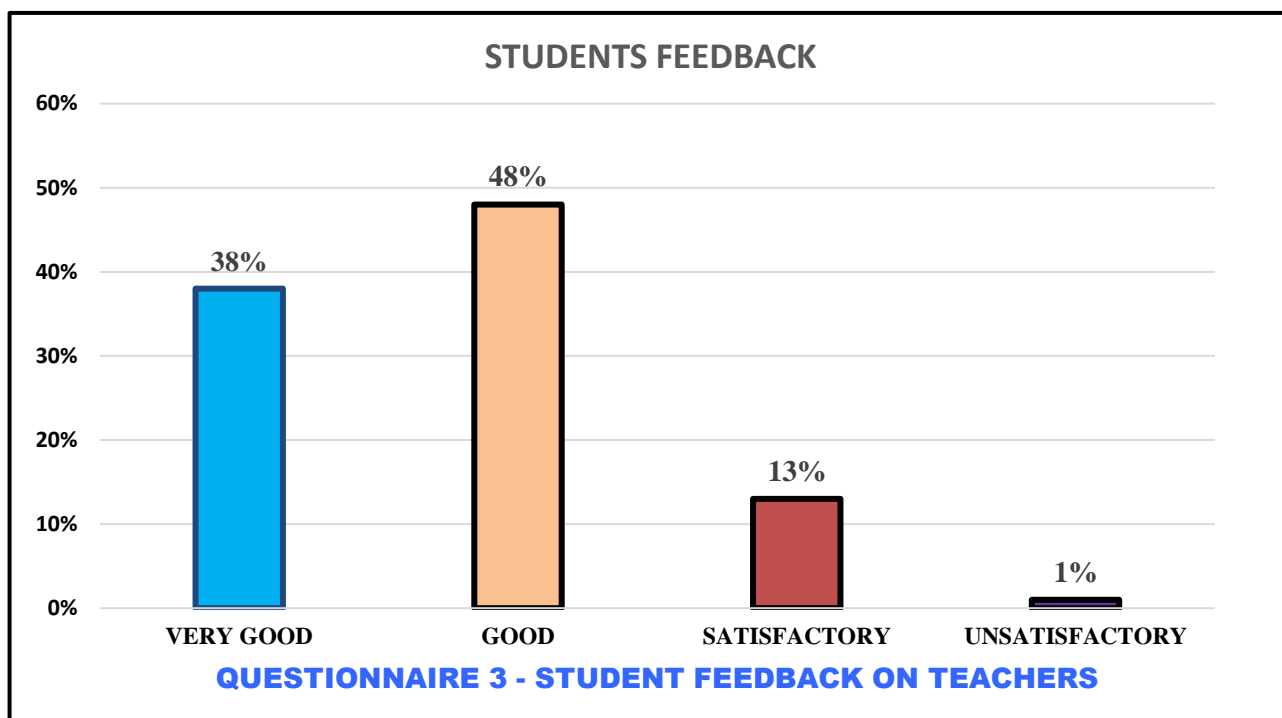


Parameters:

- The syllabus of each course was
- Library
- Class room participation method
- Internal assessment

97% students are satisfied with the teaching & Learning process and the Assessment system of the University 3% of students are still not satisfied.

QUESTIONNAIRE 3: STUDENT FEEDBACK ON TEACHERS

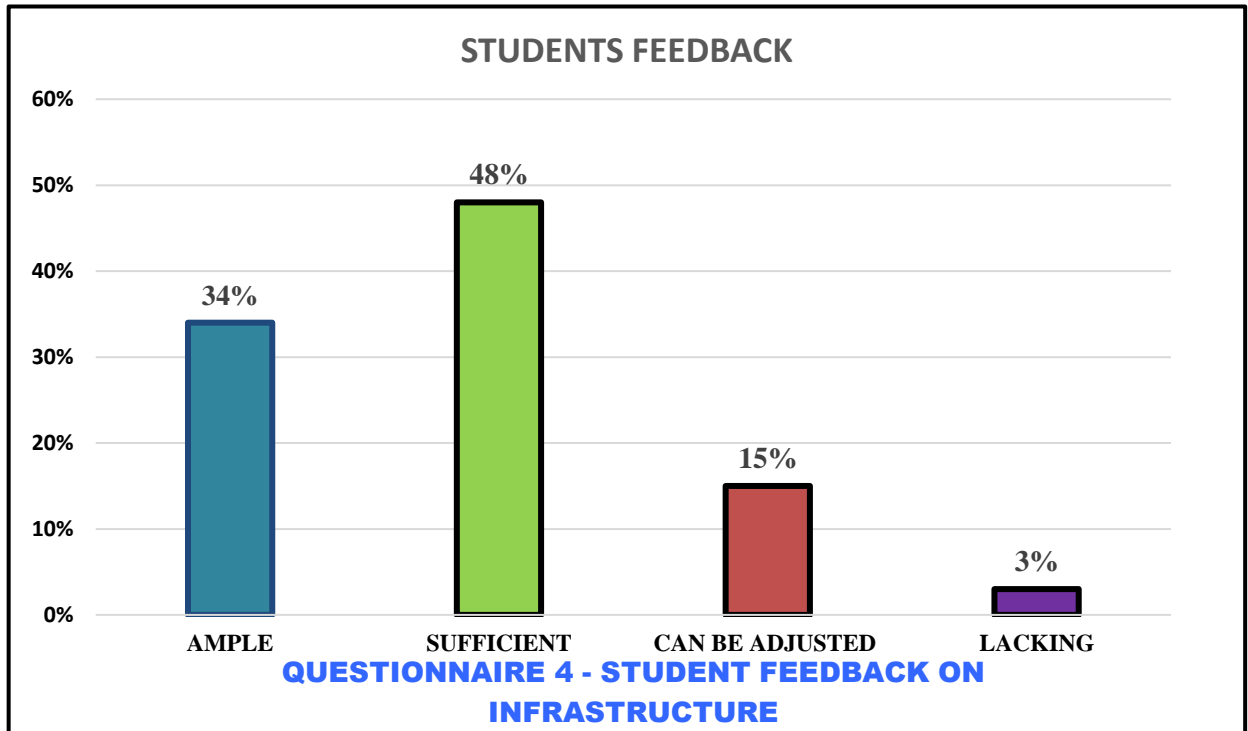


Parameters:

- A - Knowledge base of the teachers (as perceived by you).
- B - Communication Skills (in terms of articulation and comprehensibility).
- C - Sincerity/Commitment of the teacher.
- D - Interest created by the teacher.
- E - Ability to integrate course material with environment/other issues.
- F - Ability to integrate E-content with other courses.
- G - Accessibility of the teacher in and out of the class.
- H - Ability to design quizzes/Tests/assignments/examinations and projects to evaluate the students.
- I - Provision of sufficient time for feedback.

99% of students are satisfied with the teaching methodologies of the faculty members. And to satisfy the 1% of unsatisfied students the faculty members are being advised to monitor the teaching learning process for further improvement.

QUESTIONNAIRE 4: STUDENT FEEDBACK ON INFRASTRUCTURE



Parameters:

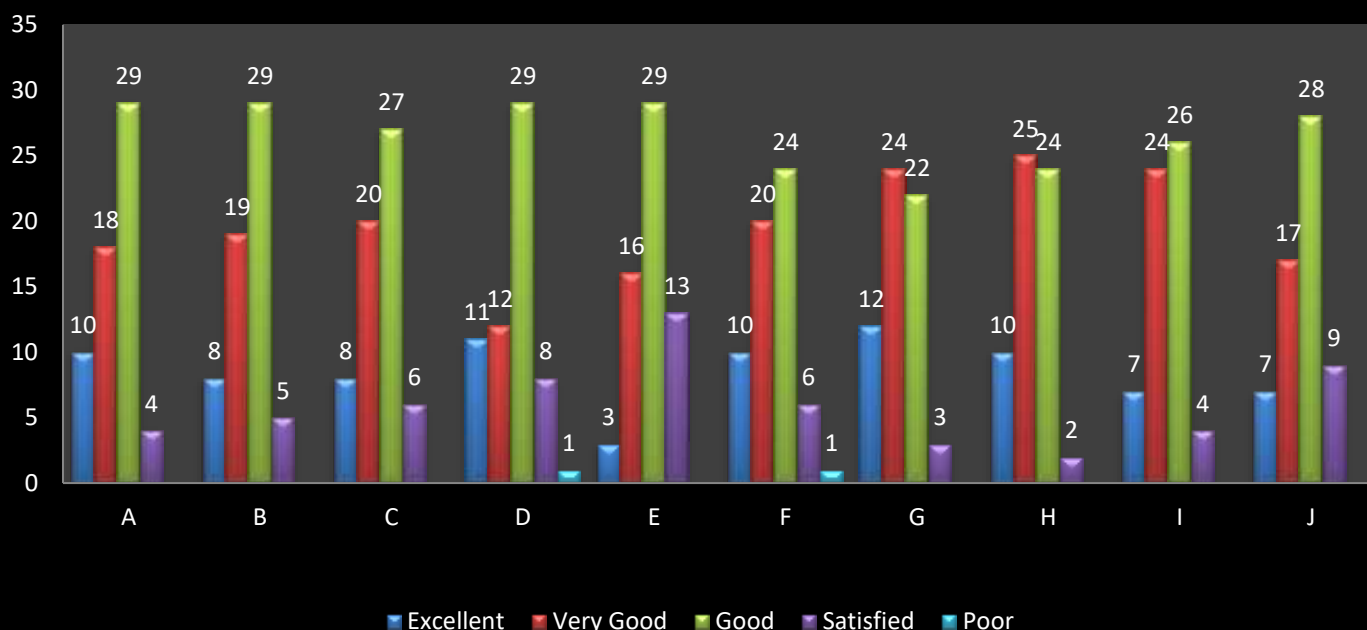
- A - Class Room
- B - Seminar Hall
- C - ICT Facility
- D - General Digital Library
- E - Department Library
- F - Laboratories
- G - Furniture
- H - Canteen

97% of students are satisfied with the Physical facilities. 3% students expecting the in future of the institution is updated with latest facilities.

II. FEEDBACK FROM TEACHERS

FACULTY FEEDBACK

TEACHER'S FEEDBACK FORM 2023-2024



Parameters:

A - Syllabus is suitable to the course.

B- Syllabus is need based.

C - Course Content is followed by corresponding reference materials.

D - Sufficient number of prescribed books are available in the library.

E- Infrastructural Facilities, Canteen and Internet.

F - Sufficient time is available to conduct examination for coverage of all units in the syllabus

G -I have the freedom to adopt new techniques of teaching

H - I have the freedom to adopt/adapt new techniques/Strategies of testing and assessment of students.

I –The Environment in the college is conducive to teaching and research.

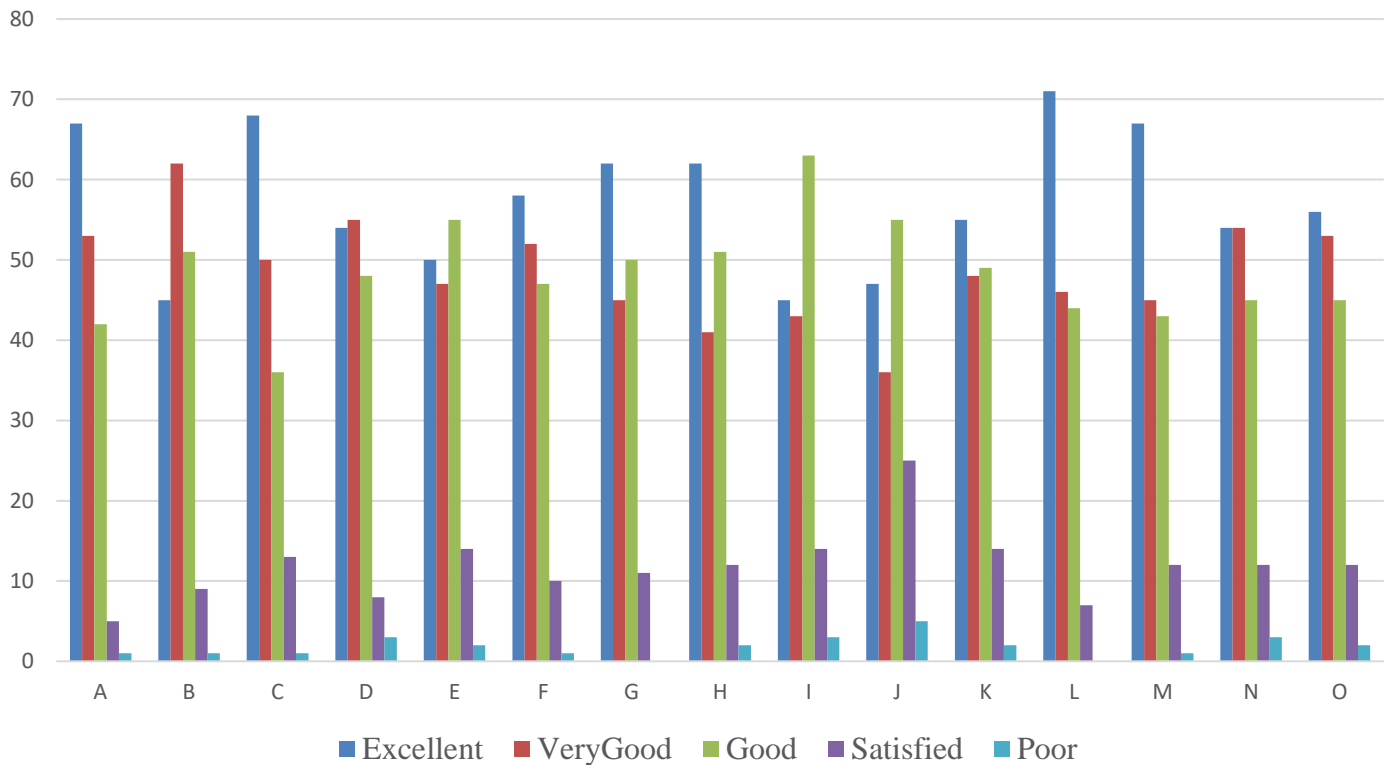
J –The Administration is teacher friendly.

While a majority of the faculty members (98.87%) are satisfied with the initiatives taken by the College towards curriculum design and development, few section of the faculty community feels that departmental level expert committee meeting could be held frequently.

III. FEEDBACK FROM

ALUMNI FEEDBACK

ALUMNI-FEEDBACK 2023-2024



Parameters:

A - How have you pleased with our college environment?

B- Mark the convenience of our college Infrastructure.

C - Grade your department faculties

D-Quality of given study materials.

E –Mark the role of Training and Placement cell.

F – Say how will you appreciate our college non-teaching staff/office Staff.

G –How well you had utilized our college Library proficiency?

H–How well your professors trained you in Project Guidance?

I –Rate our college Hostel accommodation.

J– Give a rate for our college Canteen provisions.

K–Make out the function of your department lab requirements.

L–Spot the excellence of Sports training.

M –Rate the amount of enjoyment in our college Cultural functions.

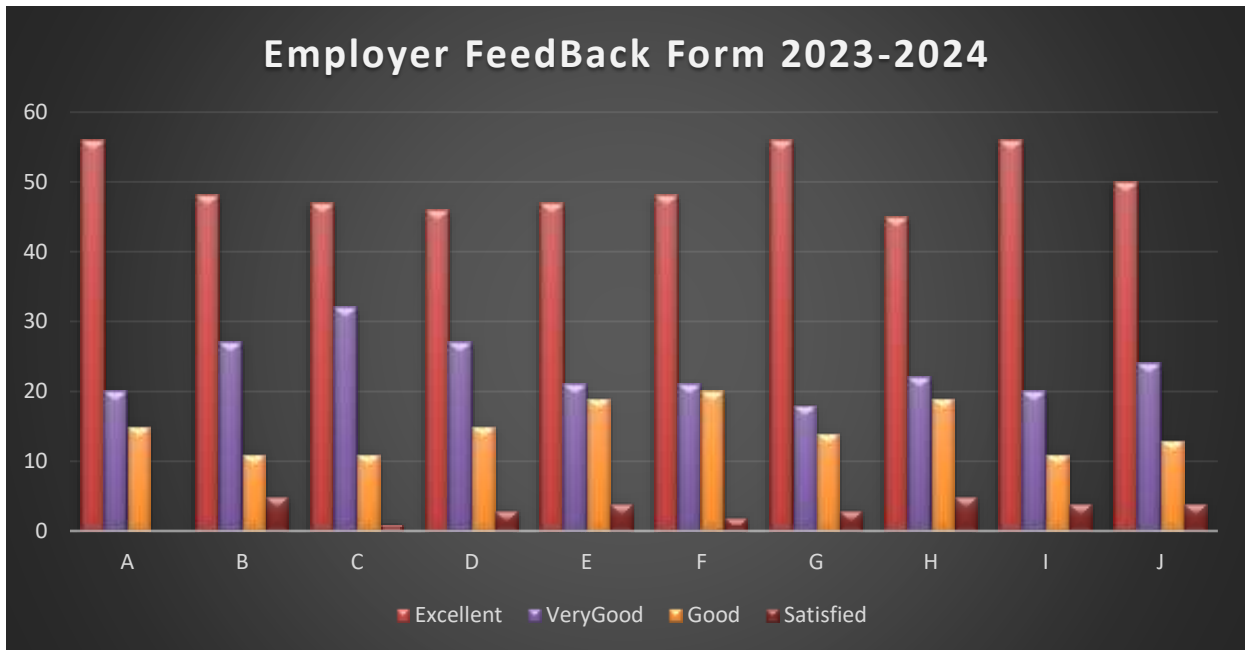
N –Say the usefulness of our college certificate courses.

O-Say how helpful was our college awareness programs were.

It is found that all the parameters were rated highly by the Alumni. Maximum 98% of the Alumni stated that the infrastructure, Teacher's quality, Sports, Cultural events, Teaching and learning process as Excellent, very good and good.

IV. FEEDBACKFROMEMPLOYERS

EMPLOYERFEEDBACK



Parameters:

A–Interpersonal Skill and Problem solving

B–Teamwork and Commitment

C – Integrity with Innovation

D - Negotiation Skill

E –Human Relation Skill

F–Discipline & Punctuality

G – Job knowledge with Communication

H –Initiative

I – Decision Making and Leadership quality

J-Administration Skill

97% Employers are Satisfied with the process of Curriculum design and development. Maximum number of Employers are acquired good presentation skills and has an ability to apply new techniques through self-learning. Still, some has to concentrate on the team work and making appropriate decisions at workplace.